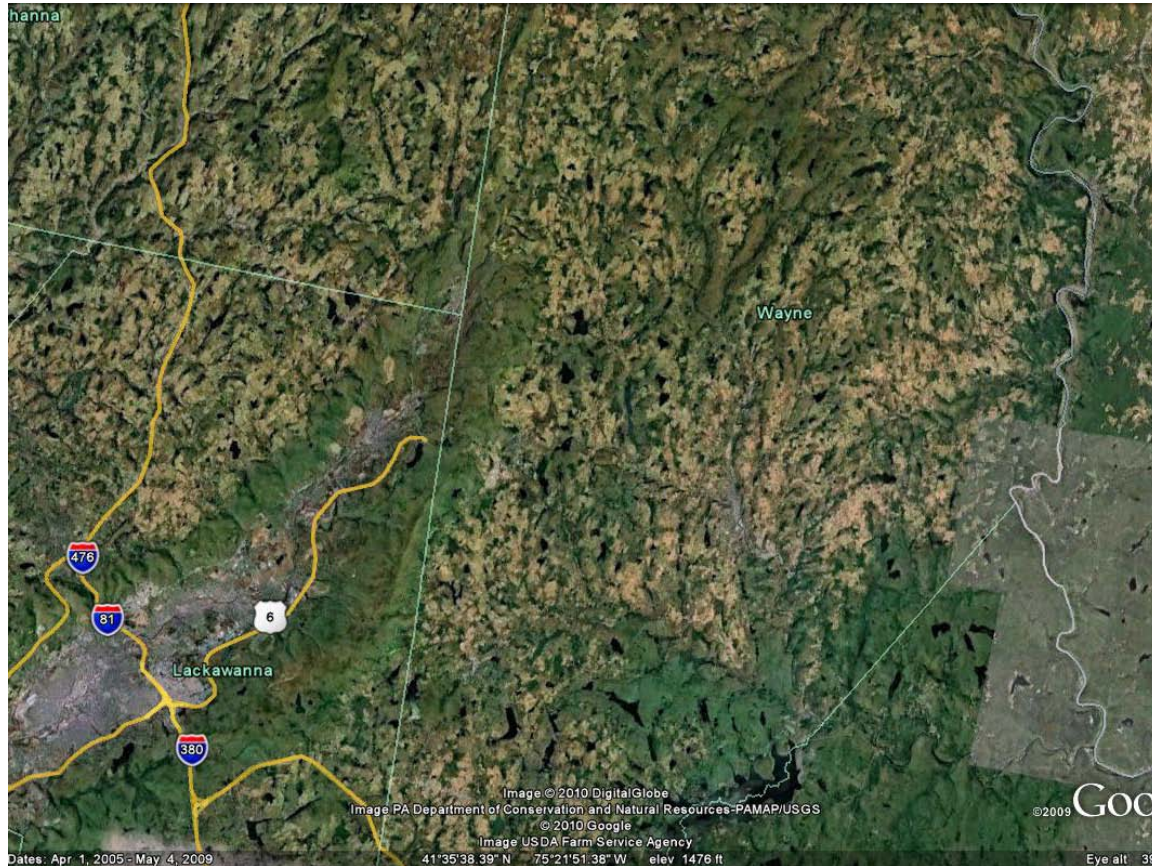


Delaware & Hudson Gravity Railroad Trail

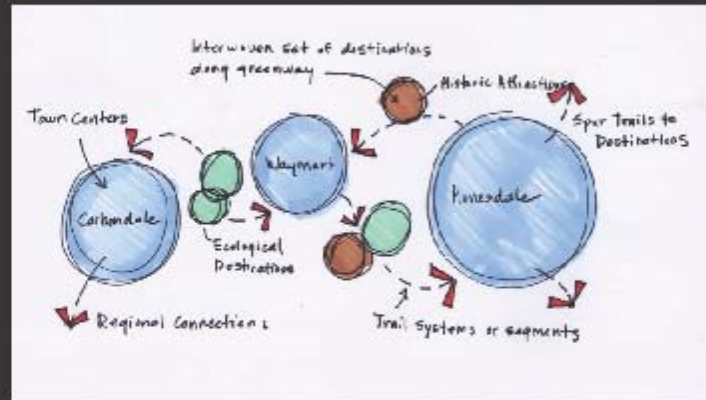
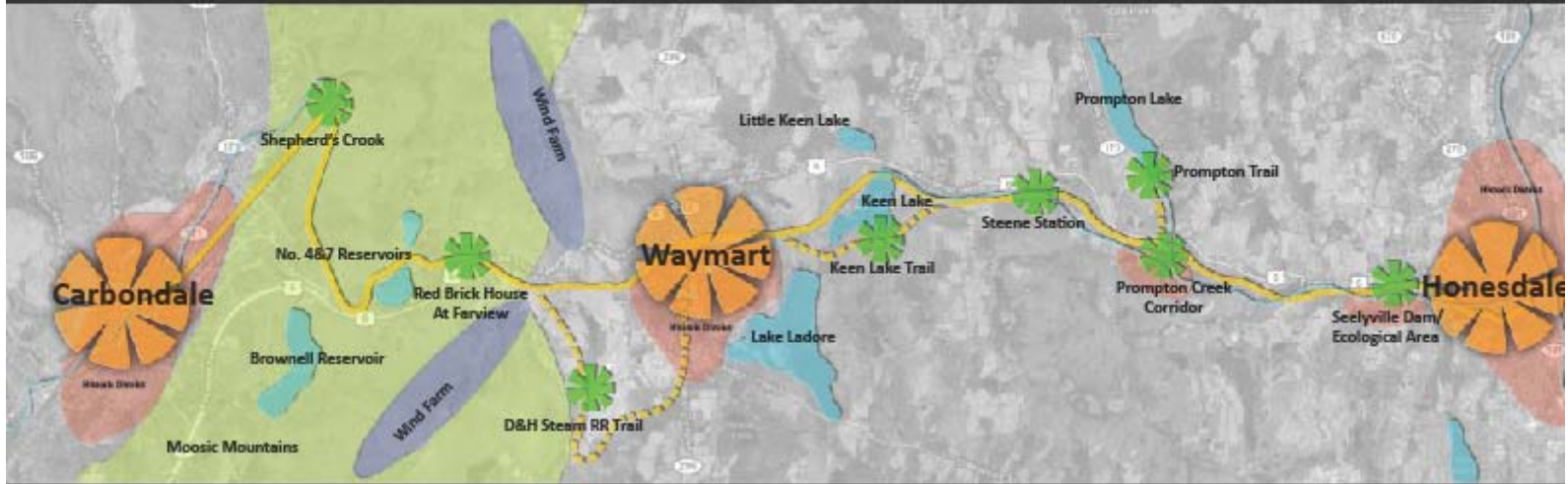
Waymart Area Historical Society
Jane Varcoe, President

570.470.5718
janev@socantel.net



Connecting Northern Lackawanna and Central Wayne,
the Delaware & Hudson Gravity Rail Line (1828-1899)
surmounted the Moosic Mountain range.

PROJECT CONCEPT



HONESDALE

SITE ANALYSIS



WAYMART

SITE ANALYSIS



CARBONDALE GATEWAY

