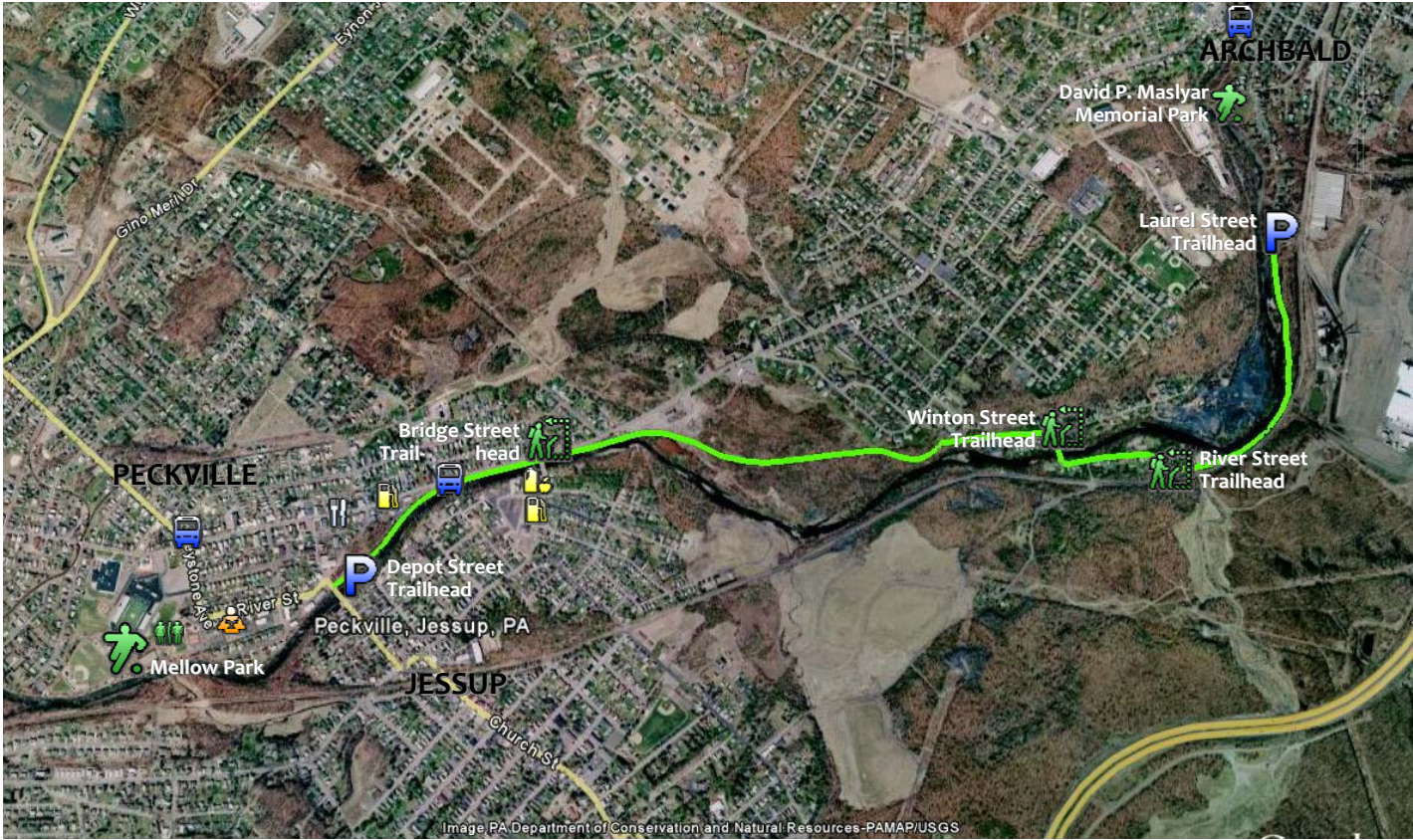


MID VALLEY ONTARIO AND WESTERN TRAIL



The **Mid Valley Ontario and Western Railroad Trail (O&W Trail)** offers a spectacular experience of the Lackawanna River and wildlife. The O&W Trail follows the river for more than two miles, beginning in Archbald and flowing south to Peckville.

This section of the Lackawanna River Heritage Trail is finished with crushed stone to allow a low impact surface when users are walking, jogging, or biking along the Lackawanna River. The O&W Trail begins at David P. Maslyar Memorial Park in Archbald. Head south along the trail and stop to enjoy Sarah Bratty Park. Continue traveling along the scenic trail and look for the beaver dam. This majestic site reveals a naturally built beaver dam backing up acid mine water into a pool, which allows the iron oxide and chemicals to settle and filter out before flowing into the Lackawanna River.

The Peckville Trailhead at Depot and Bridge Streets has parking. Head straight onto River Street and Mellow Park is two blocks on the left.

Legend	
Parking	Library
Park	Eatery
Gas Station	Bus stop
Convenient Market	Restrooms
Trail Access (no parking)	

TRAILHEADS / PARKING:

Laurel Street Trailhead: Located at the terminus of Laurel Street in Archbald.

Depot Street Trailhead: Located at the intersections of Depot, Bridge, and River Streets in Peckville.

PHOTOS

Visit LHVA's flickr photostream to view photos of the Mid Valley O&W Trail:

www.flickr.com/lackawannaheritage/



LACKAWANNA HERITAGE VALLEY AUTHORITY
 538 SPRUCE STREET, SUITE 516, SCRANTON, PA 18503
 PHONE: (570) 963-6730 x8203
 EMAIL: SMILEWSKI@LHVA.ORG
 WWW.LHVA.ORG