

CONTACTS

Natural Lands Trust

570-647-9175

Joe Vinton

jvinton@natlands.org

Preserve Manager

PO Box 189

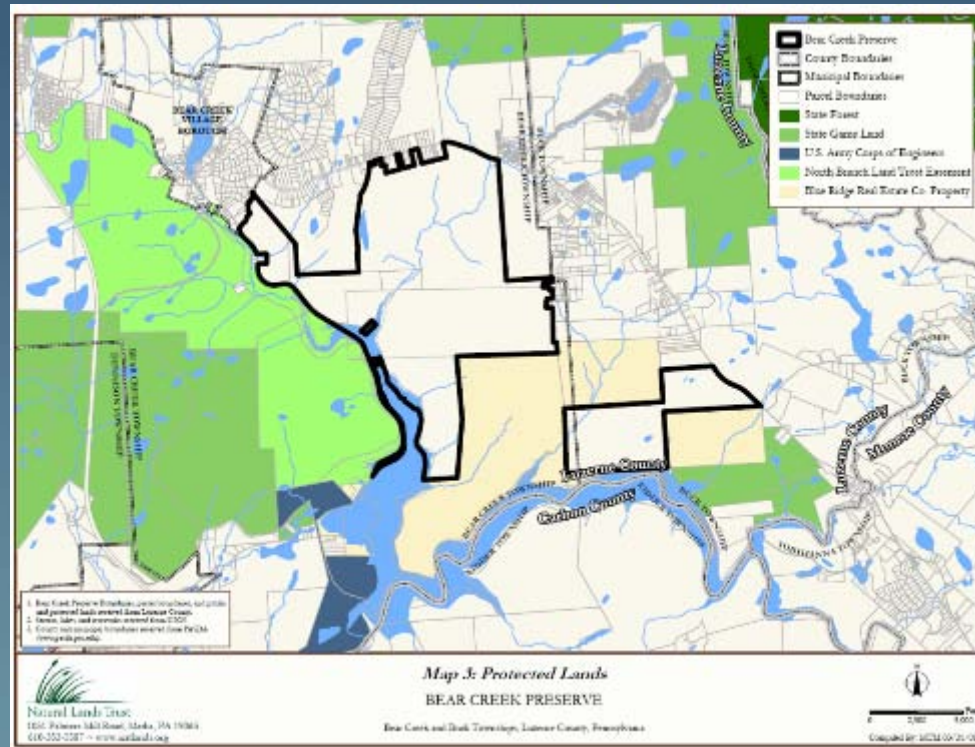
Bear Creek, PA 18602

www.natlands.org

SITE ANALYSIS SUMMARY

Site Context

- ▶ Bear Creek Preserve lies in the southern tip of the Pocono Plateau is part of a larger landscape that contains over 150,000 acres of protected lands, including state parks and forest, PA game lands, and lands owned and eased by local conservancies.

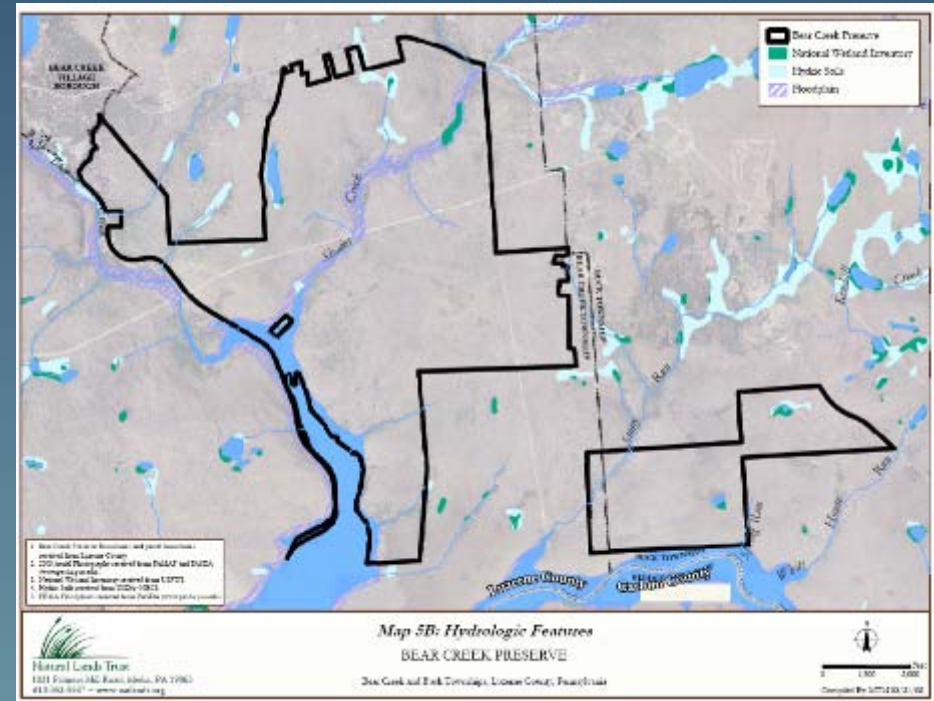


SITE ANALYSIS SUMMARY

Hydrology

Significant hydrologic features:

- ▶ Bear Creek, Shades Creek, Stony Run
- ▶ Perennial and intermittent streams and floodplains
- ▶ Wetlands & hydric soils



OVERVIEW

Natural Lands Trust Objectives

1. Natural Resource Management

- ▶ Protect and enhance wildlife habitat.
- ▶ Protect and enhance water resources.
- ▶ Protect and enhance species and plant communities of special concern.
- ▶ Establish NLT management center.



OVERVIEW

Natural Lands Trust Objectives

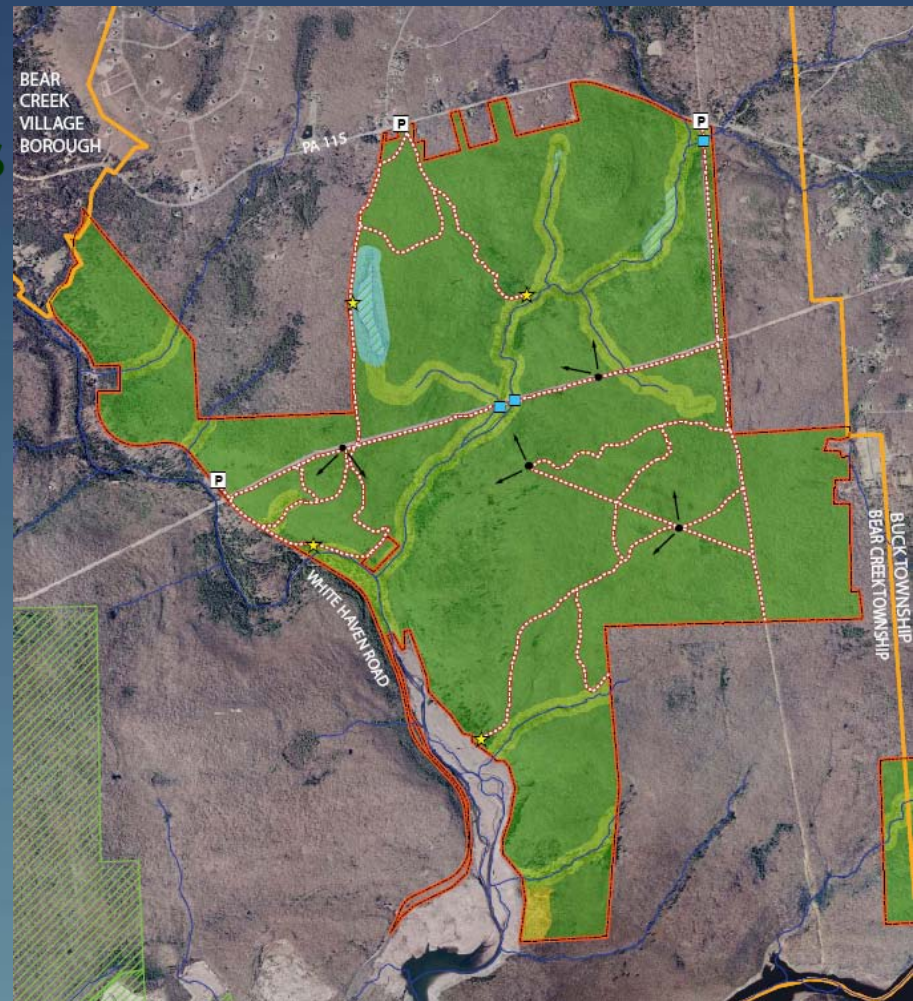
2. Nurture a public conservation ethic and enhance opportunities for connecting to nature.

- ▶ *Provide* opportunities for responsible public access
- ▶ *Offer* inspiring events, communications, and outreach activities
- ▶ *Partner* with other organizations to encourage educational programs

DRAFT RECOMMENDATIONS

Trail Network

- ▶ Pedestrian-only hiking trails
- ▶ Access to scenic vistas and interpretive locations
- ▶ Cross country skiing
- ▶ 13.6 miles - west parcel
- ▶ 7.9 miles - east parcel



West Parcel

Bear Creek Preserve Public Use Plan

DRAFT RECOMMENDATIONS

Trail Network

- ▶ Pedestrian-only hiking trails
- ▶ Access to scenic vistas and interpretive locations
- ▶ Cross country skiing
- ▶ 13.6 miles - west parcel
- ▶ 7.9 miles - east parcel



East Parcel

Draft Recommendations

Trail System Improvements

- Determine final trail alignments
- Clear vegetation, remove hazard trees, grade / compact trails, install water bars
- Develop and install entry signage to facilitate site wayfinding and encourage appropriate visitor behavior
- Develop and install trail wayfinding signage to define NLT approved Preserve trail network







Bear Creek Preserve Public Use Plan



LUZERNE COUNTY

CARBON COUNTY

East Parcel



CONTACTS

Natural Lands Trust

570-647-9175

Joe Vinton

jvinton@natlands.org

PO Box 189

Bear Creek, PA 18602

www.natlands.org