

## Who Are the D&L Trail Tenders?

The Delaware & Lehigh National Heritage Corridor Trail Tenders have been in existence since 1998. More than 5,000 volunteers of all ages have logged more than 30,000 hours along the Delaware & Lehigh (D&L) Trail since the organization's inception.

Trail Tenders provide supplemental maintenance and enhancement to sections of the D&L Trail that have been purchased through the Heritage Corridor and turned over to boroughs, cities, townships, counties, and state parks through which the trail runs. The trail is owned by these entities, not the Heritage Corridor. They are responsible for the trail's upkeep and enhancement, but unfortunately many do not have adequate budgets to provide staff and equipment to execute proper maintenance schedules. Trail Tenders provide valuable assistance by keeping the trail open to recreational users and providing trail amenities such as resting benches and picnic tables.

Volunteers do not have to take a test to become part of the Trail Tenders organization. The only requirement is a sincere interest in keeping the D&L Trail a quality recreational and educational resource. The trail is lined with an impressive number of historical and environmental resources that require year-round care. Nature is a benevolent provider of beautiful landscapes and marvelous creatures that inhabit them, but nature also will overcome and consume man-made trails and structures if they are left untended. It is the Trail Tenders who keep the trail and historic canal locks and other structures free of encroaching vegetation that will compromise and eventually ruin them.

The Trail Tenders are evolving as an organization. In 2007, four chapters were formed along the most developed areas of the trail from Easton to White Haven. The premise of forming chapters is to provide volunteers opportunities to work along the trail in their own backyards instead of driving considerable distances to attend regional cleanups. The trail stretches from Bristol in Lower Bucks County to

Wilkes-Barre in Luzerne County, a distance of 165 miles. For people in Bristol to drive to a cleanup in White Haven is unrealistic.

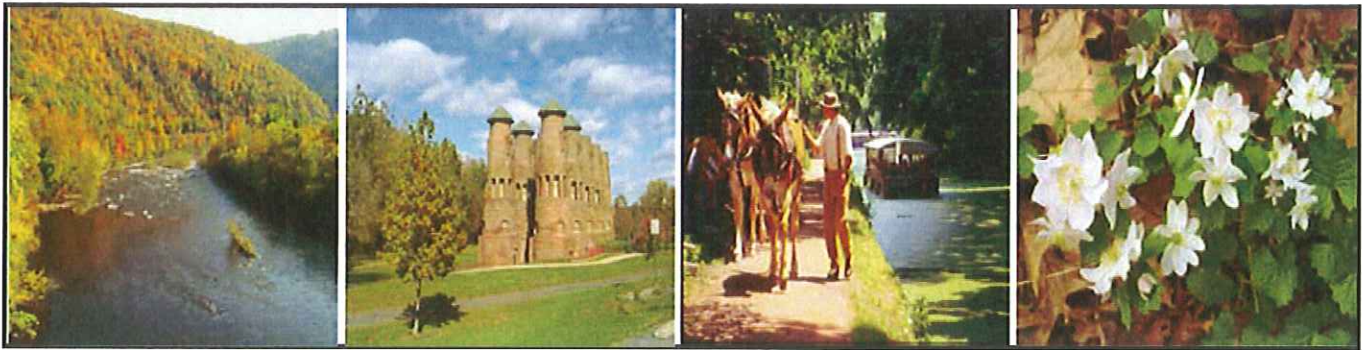
Thus, the following chapters were formed: **Lehigh Gorge**, which covers Lehigh Gorge State Park in Luzerne County; **Carbon County**, which at present includes the D&L Trail from Glen Onoko to Parryville; **Northern Lehigh**, which includes the D&L Trail from Lehigh Gap south to Slatington, and Walnutport from Bertsch Creek north to Lock 21; and **Lehigh Valley**, which is responsible for the trail from Easton to Allentown.

Additional chapters will be added, or existing chapters may be expanded, as more sections of the D&L Trail are purchased and turned over to local municipalities.

Trail Tenders come in many forms. They are dedicated individuals; high school students in need of community service; Boy and Girl Scouts providing help to their local communities or trying to earn various Scout honors; church and civic groups; corporate volunteers; hiking clubs; and environmental clubs and historical societies.

Trail Tenders eradicate invasive plant species and replace them with native species that restore ecological balance to the trail environment. Trail Tenders clean historic canal locks and preserve them as reminders of a transportation infrastructure that supported the American Industrial Revolution. Trail Tenders provide public programs that interpret the history of the canals and the towns that depended on canal commerce. Trail Tenders offer nature walks that introduce the public to intriguing environmental attributes of the trail. Trail Tenders raise funds to support their projects.

Most importantly, Trail Tenders are stewards of the D&L Trail and proponents of its purpose as a byway that introduces the public to history through recreation and education.



# The Delaware & Lehigh National Heritage Corridor

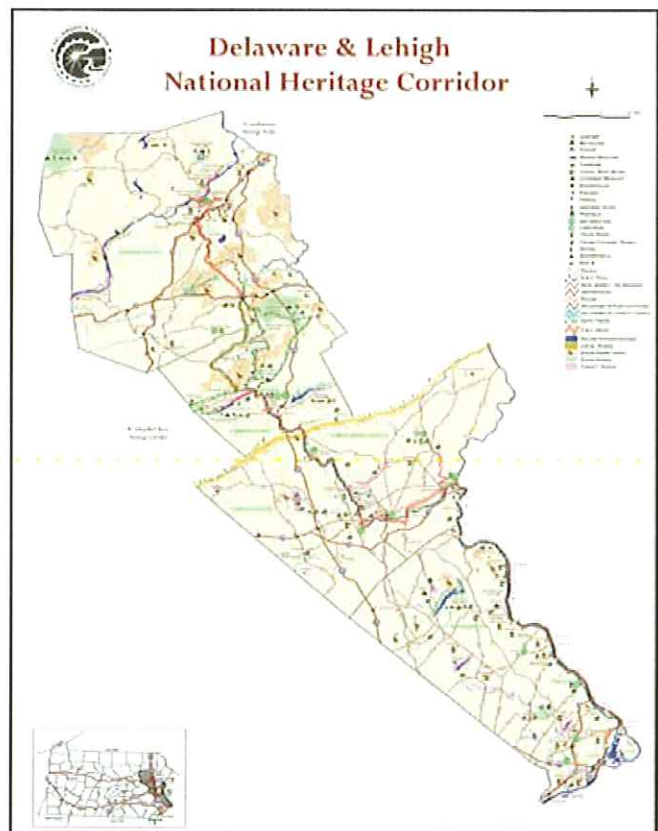
The Delaware & Lehigh National Heritage Corridor stretches nearly 165 miles across five counties and more than 100 municipalities in eastern Pennsylvania. The Corridor is a living landscape of great historical significance. Early visionary leaders established a society here that was unusually open and prosperous – a land of great opportunity.

Beginning in the late 17th century, William Penn's Sylvania colony was the most desirable destination in North America, and the rapid peopling of the region, a high degree of entrepreneurial opportunity and capacity, and abundant natural resources led to innovations in transportation, industry, commerce and engineering that made Pennsylvania a leader in industry and profoundly influenced the development of the nation.

Today, the remarkably intact remnants of the system are at the core of historic towns, ethnic neighborhoods and natural landscapes of great beauty and richness. Trails built on historic canal paths and railroad beds open the Corridor's past to thousands of visitors each year. The Trail Tenders, a Corridor-wide system of volunteers, are responsible for maintaining these trails. Without their help, much of the Corridor's heritage would be hidden beneath time.

The Delaware & Lehigh National Heritage Corridor (D&L) was commissioned by the United States Congress in 1988. The D&L oversees the construction and maintenance of the D&L Trail, which follows the historic route of anthracite coal from mine to market. The D&L also conducts a partnership program with state and municipal agencies and non-profit organizations that are interested in preserving historic, cultural and scenic resources of the Corridor.

*The Lehigh and Delaware canals carried anthracite coal from White Haven to Bristol for more than 100 years.*



*Railroads began replacing canal traffic in the mid-1850s. By the late 1930s, commerce on the canal had all but ended.*

# Delaware and Lehigh National Heritage Corridor

Where America was Built™

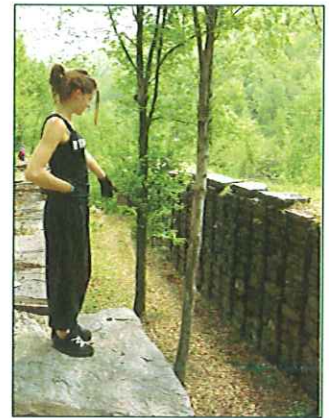
## The Trail Tenders



### D&L TRAIL IS A PERFECT PLACE FOR VOLUNTEERS

The Delaware & Lehigh (D&L) Trail meanders from Wilkes-Barre in Luzerne County to Bristol in Bucks County. It links the present to the past and offers visitors a multitude of opportunities to view spectacular scenery, learn about the Corridor's settlement and development, and get great exercise by walking, running, hiking, biking, and cross-country skiing.

Keeping the trail in tip-top shape requires volunteer help; lots of it. Volunteers who maintain the D&L Trail are called *Trail Tenders*. They are people of all ages who appreciate the trail and understand the importance of trail stewardship. Trail Tenders pick up trash that litters the trail and trail perimeter; control invasive plants that threaten the ecology of the trail; and clean and interpret historical structures along the trail such as canal locks, locktender's houses and railroad sites. They also maintain a one-acre native plant preserve at Sand Island in Bethlehem,



*Delaware & Lehigh National Heritage Corridor Spans Five Counties*

*The Delaware & Lehigh National Heritage Corridor includes five Pennsylvania counties: Luzerne, Carbon, Lehigh, Northampton and Bucks. The Corridor is recognized as the birthplace of the 19th century Industrial Revolution in America and contains hundreds of historic and natural sites. The 165-mile D&L Trail is the "spine" of the Corridor and follows the paths of the Lehigh and Delaware canals and railroads that carried anthracite coal from mines to markets. The Lehigh River originates in the northern forests of the Corridor and flows south and east until it empties into the Delaware River at Easton. Much of the D&L Trail follows these two scenic rivers.*

*The Corridor is also a Pennsylvania State Heritage Area.*



**DCNR**



### **JOIN TODAY! Contact:**

Dennis Scholl, Outreach Coordinator  
2750 Hugh Moore Park Rd.  
Easton, PA 18042  
610-923-3548 x225  
dennis@delawareandlehigh.org  
www.delawareandlehigh.org



### BECOME A TRAIL TENDER!

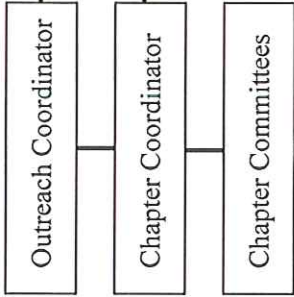
There are four regional Trail Tenders chapters: Carbon County/Lehigh Gorge, Northern Lehigh; Lehigh Valley, and Easton. Each chapter tackles projects within its own area, but all chapters get together twice a year for "special projects" that require more help. The Trail Tenders also conduct social events throughout the year, including an annual picnic.





Oversees program, conducts semi-annual chapter coordinator meetings, organizes workshops on fundraising, volunteer recruitment, public relations, trail interpretation, and organizing short- and long-term trail projects

Oversees the operation of the chapter, conducts quarterly member/committee meetings, maintains working relationship with municipal landowner and D&L Outreach Coordinator



- Public Relations**
- \* News releases for meetings, cleanups and other events
  - \* Organize display for public events
  - \* Maintain inventory of D&L brochures

- Trail Maintenance**
- \* Trash cleanups
  - \* Historic structure cleanups
  - \* Eradication of invasive plants
  - \* Establish native plants
  - \* Address erosion and other major issues with landowner

- Trail Amenities**
- \* Benches
  - \* Picnic tables
  - \* Bike racks
  - \* Pavilions and long-term projects

- Fundraising/Grants**
- \* Organize fundraisers for trail amenity and trail interpretation projects and other club financial needs
  - \* Attend grant workshops provided by the D&L

- Recruitment**
- \* Schedule chapter display at local events and organize event volunteers
  - \* Work with public relations to publicize participation at local events
  - \* Maintain volunteer database and distribute to all chapter members

- Trail Interpretation**
- \* Interpretive signage for historical and natural attributes
  - \* Wildlife observation platforms
  - \* Nature loop trails
  - \* Birding areas

# Delaware and Lehigh National Heritage Corridor

Where America was Built™

## Boy Scout Service Opportunities



### Delaware & Lehigh National Heritage Corridor Spans Five Eastern PA Counties

The Delaware & Lehigh National Heritage Corridor includes five Pennsylvania counties: Luzerne, Carbon, Lehigh, Northampton and Bucks. The Corridor is recognized as the birthplace of the 19th century Industrial Revolution in America and contains hundreds of historic and natural sites.

The 165-mile D&L Trail is the "spine" of the Corridor and follows the paths of the Lehigh and Delaware canals and railroads that carried anthracite coal from mines to markets. The Lehigh River originates in the northern forests of the Corridor and flows south and east until it empties into the Delaware River at Easton. Much of the D&L Trail follows these two scenic rivers.

The Corridor is also a Pennsylvania State Heritage Area.



DCNR



For more information, contact:  
Dennis Scholl, Outreach Coordinator  
2750 Hugh Moore Park Rd.  
Easton, PA 18042  
610-923-3548  
dennis@delawareandlehigh.org  
www.delawareandlehigh.org

### D&L TRAIL IS A PERFECT PLACE FOR SCOUT VOLUNTEERS

The Delaware & Lehigh (D&L) Trail meanders from Wilkes-Barre in Luzerne County to Bristol in Bucks County. It links the present to the past, offering visitors a multitude of opportunities to view spectacular scenery, learn history about the Corridor's settlement and development, and get great exercise by walking, running, hiking, biking, and cross-country skiing. The D&L Trail is ever-changing, with new segments opening every year and others receiving improvements that make them more user-friendly. Keeping the trail in tip-top shape requires lots of volunteer work. Volunteers who maintain the D&L Trail are called **Trail Tenders**; people of all ages who appreciate the trail and understand the importance of trail stewardship. Scouts can become Trail Tenders, too. You and your adult leaders can take part in litter cleanups, repair drainage problems, patch trails, clean and replace trail signs, control invasive plants, and undertake a variety of other trail enhancement projects. It's a great way to provide service to your community and the visitors who travel the D&L Trail.



Scouts such as these from White Haven have provided valuable services to the D&L Trail. Some have designed trail enhancement projects to earn Eagle Scout awards.



### HOW CAN YOU BECOME PART OF THE TRAIL TENDERS?

There are opportunities for Scouts of all ages to become involved with the D&L Trail. Since the trail winds from Luzerne to Bucks counties, Scouts from Minsi Trails, Northeastern Pennsylvania and Bucks County councils can take part.

These are just some project ideas for Scouts along the D&L Trail. We'll be happy to listen to your ideas. Contact us today!

**CUBS** and their leaders can organize trail cleanups and establish bluebird trails and plant wildflowers.



**BOY SCOUTS** are perfect cleanup organizers and can identify invasive plants and learn how to get rid of them. The Heritage Corridor has five specific service opportunities for Eagle Scout candidates.



**VENTURING** crews can initiate historic preservation projects and other long-term trail enhancements.

